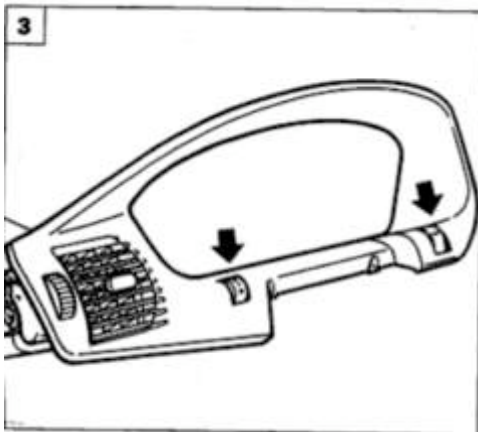
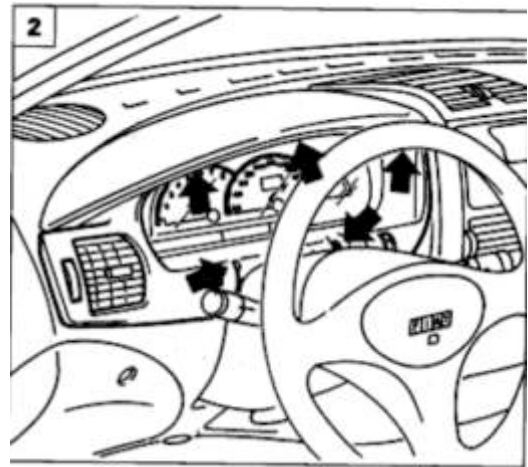
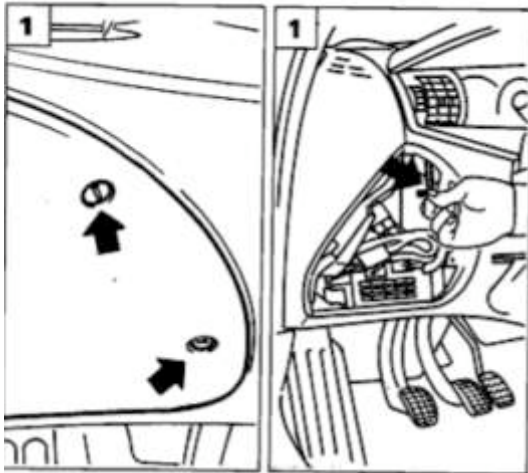
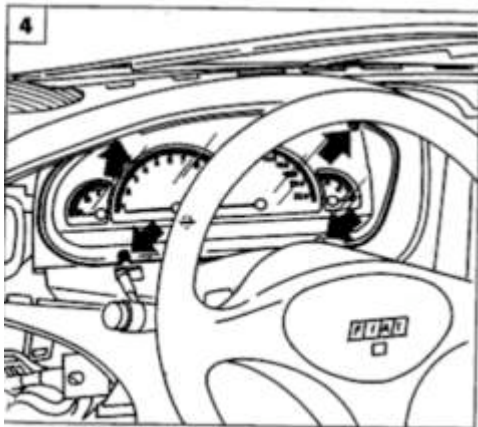


1st you need to take off the dash. A few pic. where the screws are.

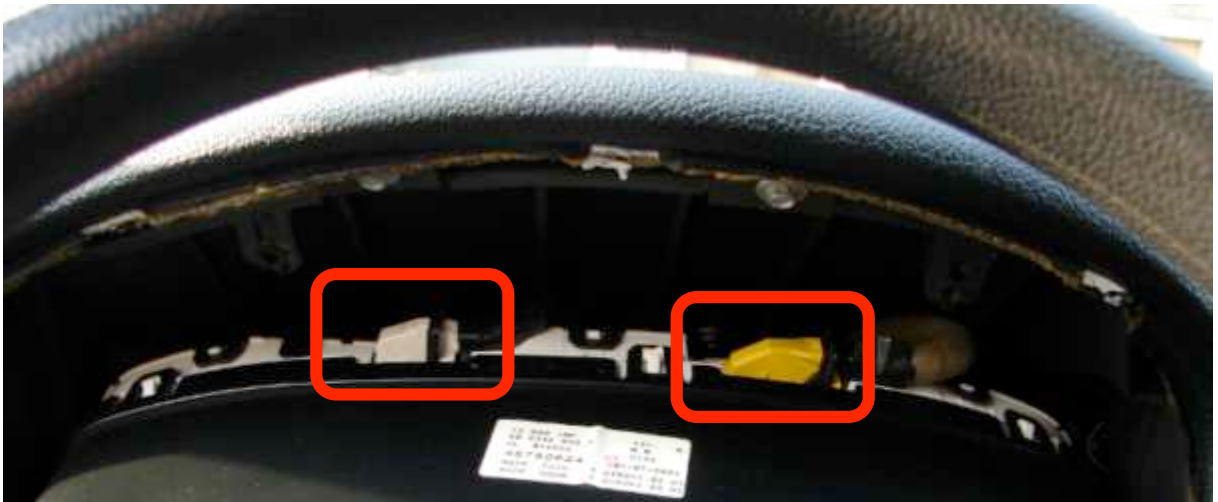


Then disconnect connetcors for these switches



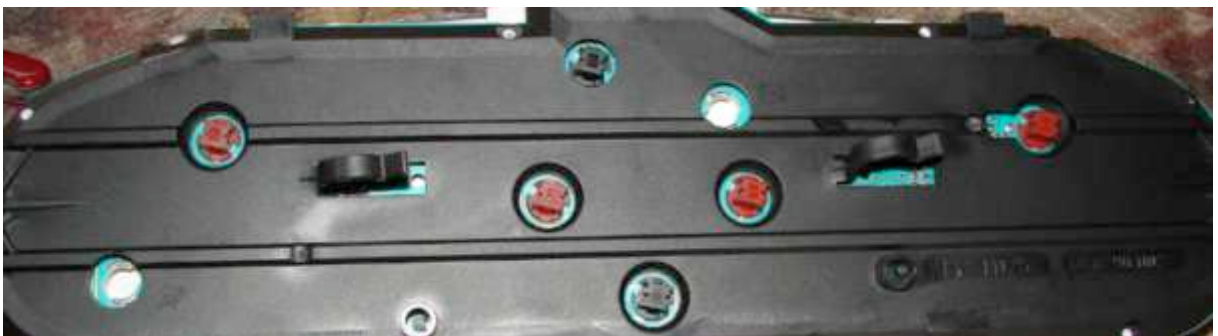
After the abowe is done, remove the dash cover and unscrew these screws.

Disconnect the connectors (circled red) and take out the dash.



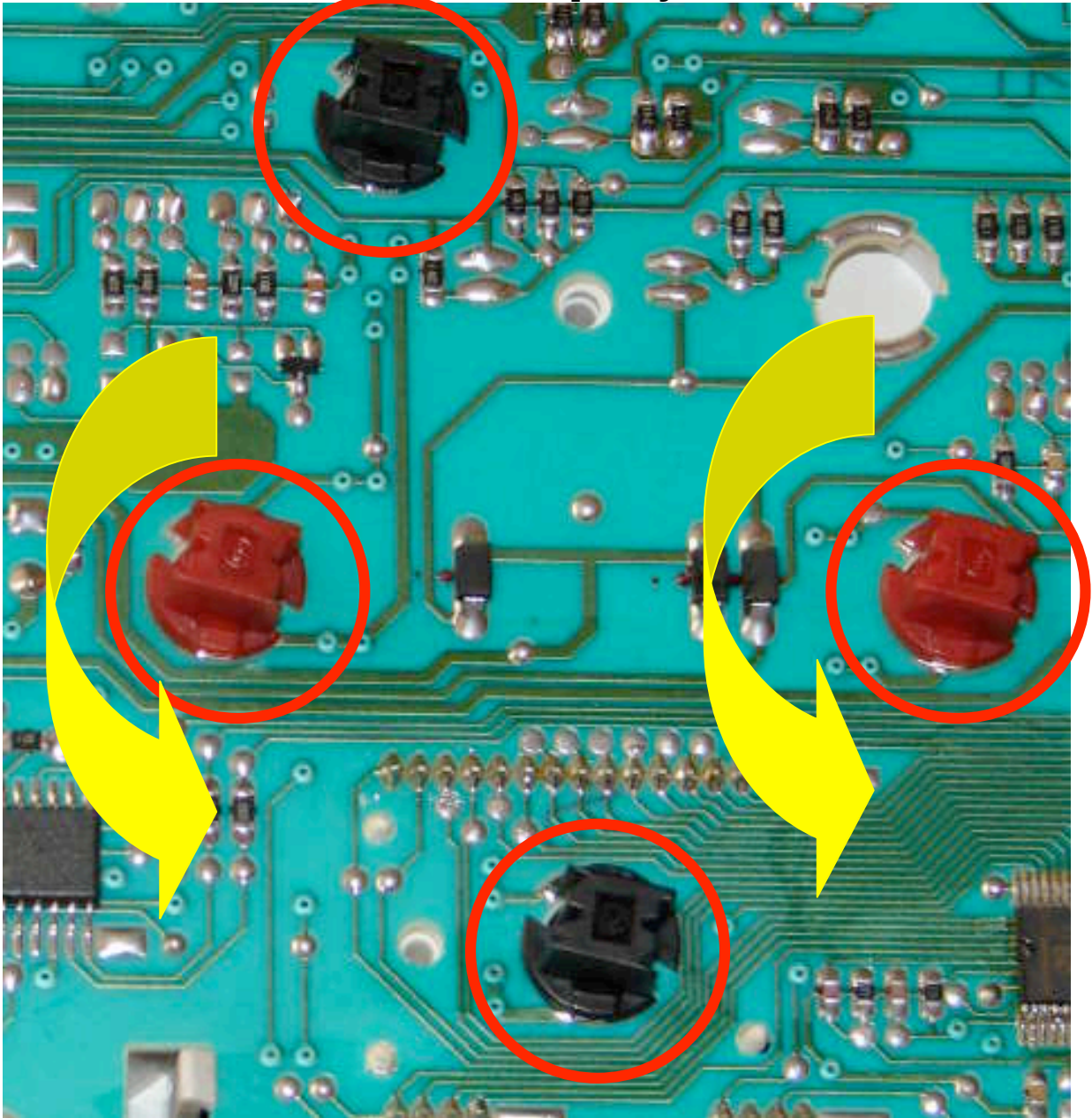
WARNING - AFTER THE CONNECTORS HAVE BEEN REMOVED DO NOT TURN THE IGNITION KEY IN ANY WAY, THE AIR BAG LIGHT WILL LIGHT UP IF YOU DO !!!!!!!

Now take the dash out and put it on the passenger seat. So you get access to the back part of the dash.



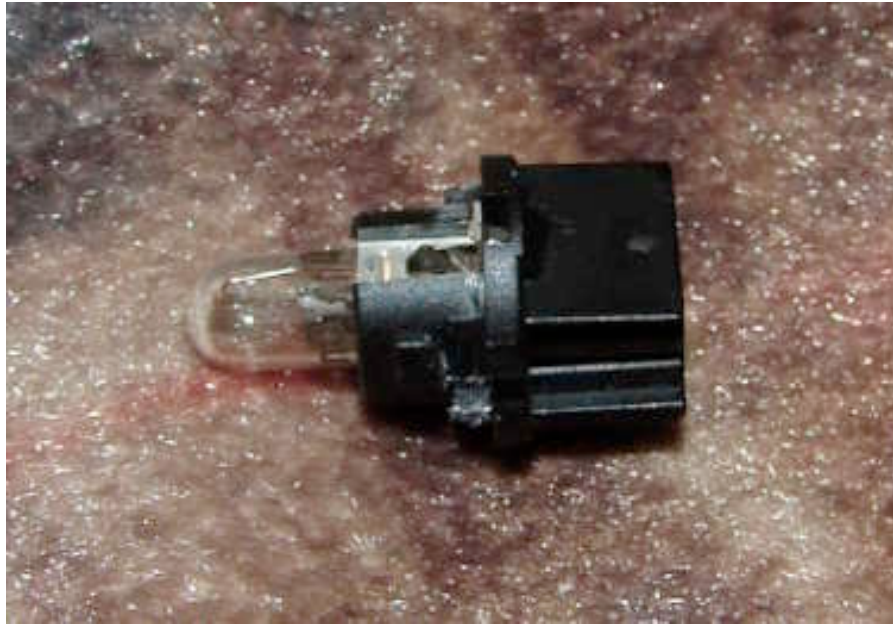
The red circled are the bulb holders. You need to turn them anti clockwise to get them out. So turn them and then pull them out.

NOTE – I have removed the plastic cover over it, so I gain more room for my fingers !

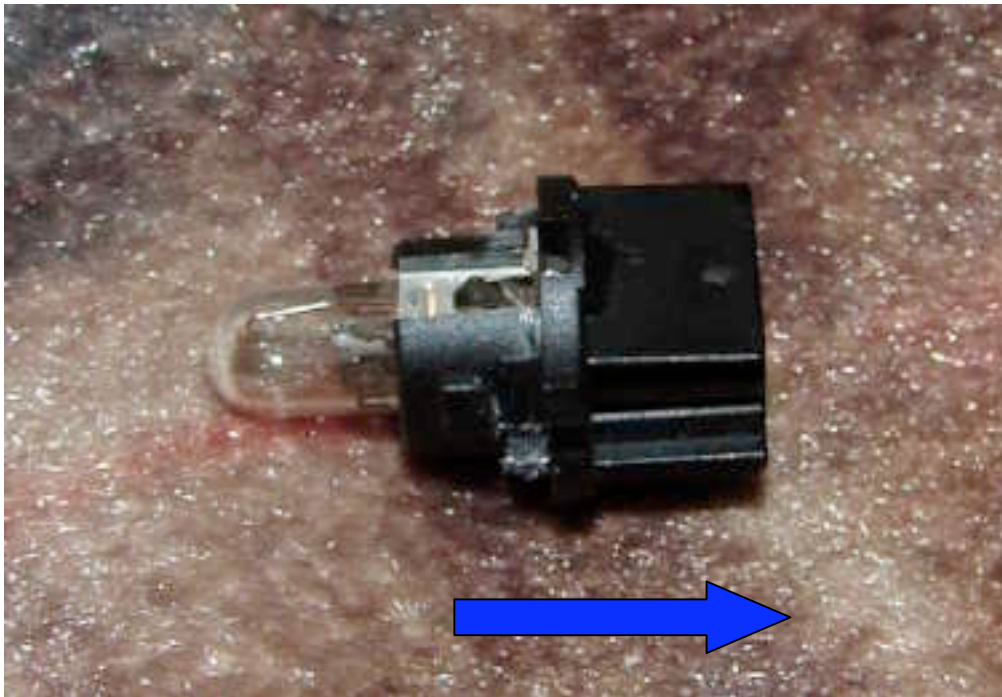




After you have removed them, they will look like this.



To get the bulb out you need to pull it out of the bulb holder in the arrow direction. Holding the bulb and pulling the bulb holder – or reverse.



After you done it, it will look like this.



The bulbs are a bayonet type 5W.

After you put in the new bulb, screw it in clockwise and put the dash back in. But try if all works before you put the dash cower on again.

Job done ☺